

MINISTRY OF EDUCATION
SECONDARY ENGAGEMENT PROGRAM
GRADE 8
INTEGRATED SCIENCE

Week 2

Lesson 1 – Worksheet 1

Fill in the blanks

Complete each statement below using the words given in the word bank below. Some of the words may not be used at all.

Word bank				
storage	epithelial	xylem	cuticle	four
food	photosynthesis	epidermal	photosynthetic	phloem
tissue	water	storage	five	vascular

1. Similar cells that group together to perform the same function is called
2. In plants, the..... tissue covers the outer surface and prevents it from drying out using the whereas the..... tissue contains the chloroplast and allows for..... to occur.
3. The transport tissues are and
4. The main functions of the transport tissues are to transport and
5. The parenchyma tissue aids in support and plays an important role in
6. There aredifferent types of tissues in animals.
- 7.tissues are found mainly in the leaves of plants.

Match each type of tissue to its correct function.

Type of tissue	Functions
- Epithelial	respond to stimulation and contraction to provide movement.
- Supportive	allowing the propagation of electrochemical signals in the form of nerve impulses that communicate between different regions of the body
- Nervous	Covers the outside of the body and lining of many internal passages
- Muscular	binds the cells and organs of the body together and functions in the protection, support, and integration of all parts of the body.
- Connective	composed of thick cell walls for support.

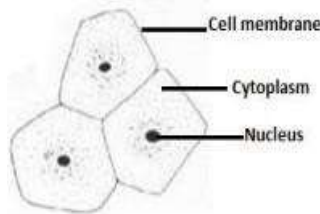
Section B

Identify each of the images given below as *a cell, tissue or organ*

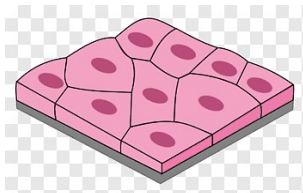
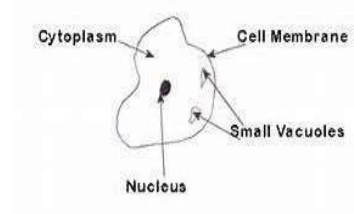
(1)



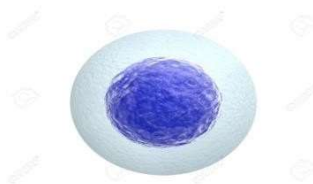
(2)



(3).....



(4)



(5)



(6)

MINISTRY OF EDUCATION
SECONDARY ENGAGEMENT PROGRAM
GRADE 8
INTEGRATED SCIENCE

Week 2

Lesson 1: Worksheet 1 - Answers

Fill in the blanks

1. Similar cells that group together to perform the same function is called **tissues**.
2. In plants, the **epidermal** tissue covers the outer surface and prevents it from drying using the **waxy cuticle** whereas the **photosynthetic** tissue contains the chloroplast and allows for **photosynthesis** to occur.
3. The transport tissues are **xylem** and **phloem**.
4. The main functions of the transport tissues are to transport **food** and **water**.
5. The parenchyma tissue aids in support and plays an important role in **storage**.
6. There are **four** different types of tissues in animals.
7. **Photosynthetic** tissues are found mainly in the leaves of plants.

Matching

Epithelial tissue - covers the outside of the body and lining of many internal passages

Supportive tissue - composed of thick cell walls for support.

Nervous tissue- allowing the propagation of electrochemical signals in the form of nerve impulses that communicate between different regions of the body

Muscular tissue - responds to stimulation and contraction to provide movement.

Connective tissue - binds the cells and organs of the body together and functions in the protection, support, and integration of all parts of the body.

Section B

- a. tissue
- b. Tissue
- c. Cell
- d. Tissue
- e. Cell
- f. Organ